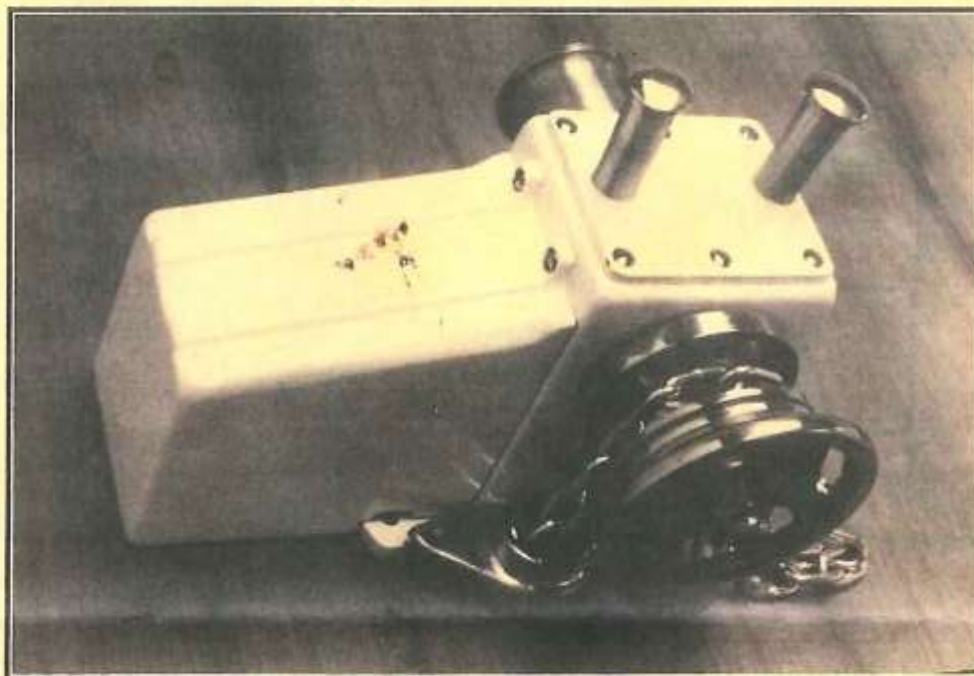


Anchor Winch



- Manufactured By Doc Freeman's
- Cast Bronze With A Stainless Steel Shaft
- Reliable Worm Gear Drive
- Power Up / Power Down Reversible Motor
- Lifts Rope Or Chain Anchor Rodes
- Lifts 60 Feet Per Minute At 350 Pound Pull
- One Year Limited Warranty On Parts & Labor
(Please See Other Side For Warranty Details)



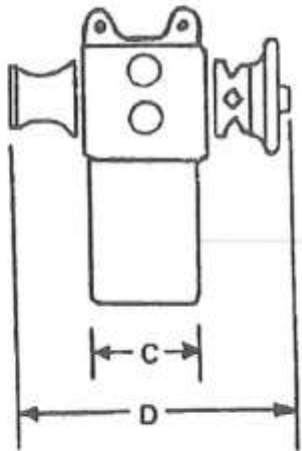
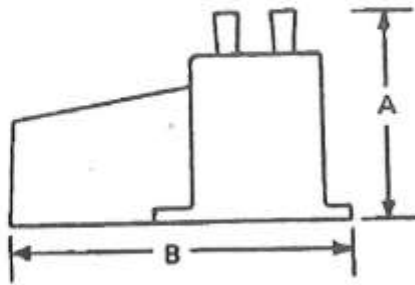
DOC FREEMAN'S

999 North Northlake Way • Seattle, WA • 98103



800 247-2149 USA
800 423-8641 WA

206 633-1500 LOCAL
206 634-2943 FAX (24 Hour)



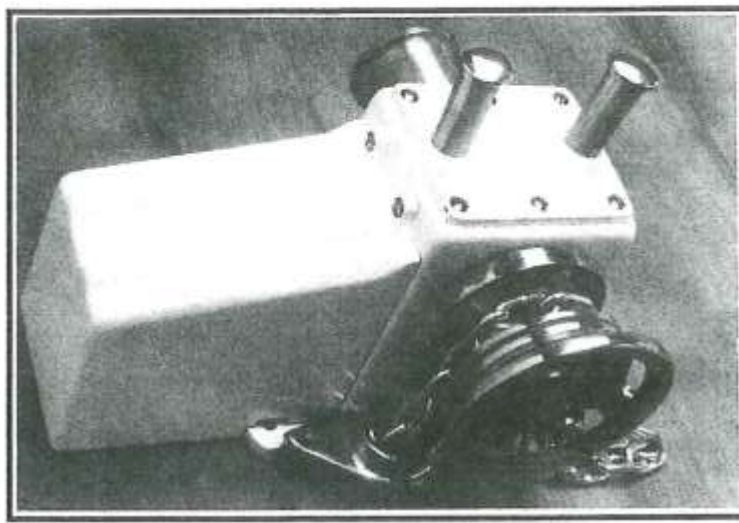
Castings:	Red Bronze
Main Shaft:	303 Stainless Steel
Motor:	12 Volt Reversible Hi-Torque Intermittent Duty
Gears:	Worm And Gear, 40:1 Ratio
Lubrication:	140 Wt. Gear Oil
Chain Sizes:	1/4" BBB, 1/4" Proof Coil 5/16" BBB, 5/16" Proof Coil U.S. Chain Recommended
Max. Capacity:	350 Pounds At 200 Amps
Line Speed	60 Feet Per Minute At 350 Lbs. Pull
Dimensions:	'A' - 12 1/4" 'B' - 16" 'C' - 5 1/4" 'D' - 13 1/4"
Shipping Weight:	95 Pounds

Warranty

The McMurry Anchor Winch Is Guaranteed To Be Free Of Defects In Materials And Workmanship Under Normal Use For A Period Of One Year after original consumer purchase. Warranty does not cover removal or re-installation of anchor winch, nor does it cover any incidental or consequential damages that may result from winch failure. Warranty does not cover damage resulting from improper installation, accident, negligence, misuse or from unauthorized alterations. To make a warranty claim, anchor winch must be shipped freight pre-paid to Doc Freeman's, Inc. Proof of purchase is required. The anchor winch will be repaired or replaced at the discretion of Doc Freeman's, Inc.

Note

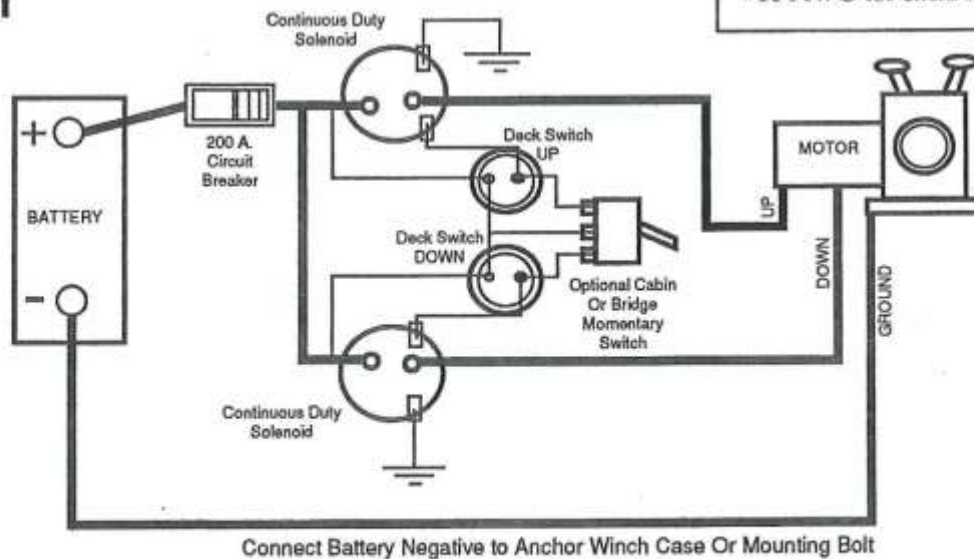
Doc Freeman's is not responsible for selection of anchor winch by others, including distributors or agents. All specifications are subject to change without notice and without incurring any obligation to incorporate such changes into products already completed or in the hands of purchasers.



Installation Suggestions

1. Mount the winch as close to level as possible to insure proper oil distribution.
2. For easier installation and service, install the mounting bolts with the threads and nuts *up*. This way you can remove the winch without pulling the mounting bolts out of the deck
3. Install a positive means of electrically disconnecting the winch from your battery in the event of switch failure.
4. A 200 amp fuse or circuit breaker must be used to guard against overload or short circuits.
5. **IMPORTANT!** The McMurry winch uses a dual directional motor. The motor has two electrical connections, one for positive "up" and one for positive "down". The negative (ground) wire connects to the winch's case. See the wiring diagram below.

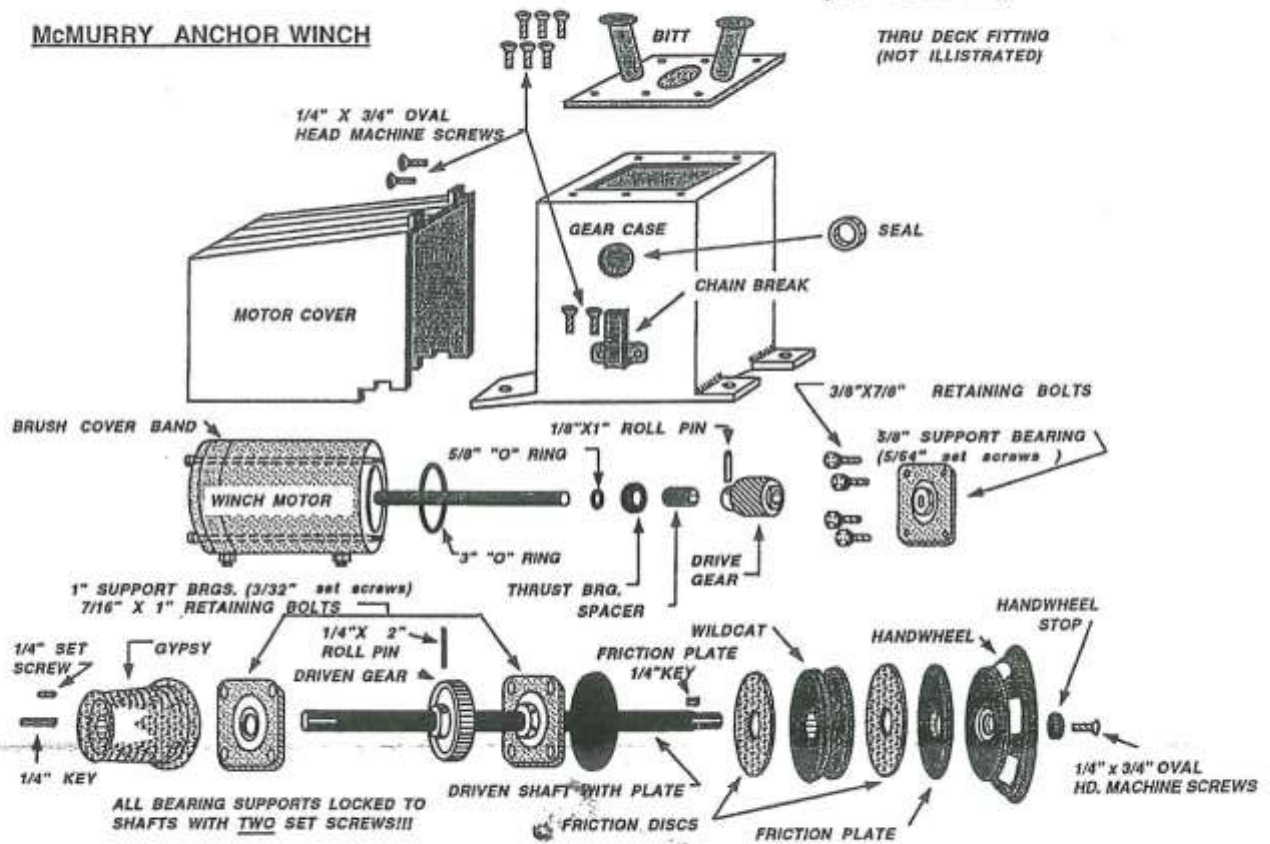
Typical Wiring Diagram



Minimum Recommended Wire Sizes
 1-0 AWG for runs less than 20 feet
 2-0 AWG for most runs over 20 feet
 #12 AWG for solenoid to switch wires,
 #10 AWG for extra long runs

McMURRY ANCHOR WINCH

(NOT TO SCALE)



Service Information

- The oil level is factory filled to the level of the chain break screws (approximately 40 ounces). Do not over fill winch.
- Use only 140 wt. gear oil in this winch.
- Motor brushes should be checked once a year. If necessary, replace brushes with Autolite # SB2.
- All parts are available from Doc Freeman's, Inc., the exclusive manufacturer of the McMurry Anchor Winch



DOC FREEMAN'S

999 North Northlake Way • Seattle, WA • 98103

800 247-2149 USA
800 423-8641 WA

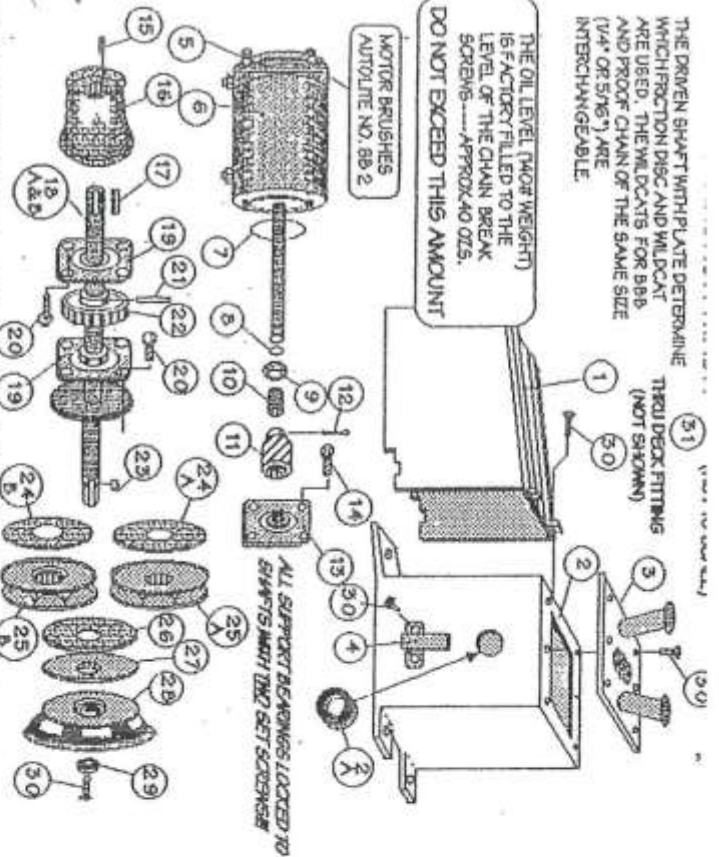


206 633-1500 LOCAL
206 634-2943 FAX (24 Hour)

THE DRIVEN SHAFT WITH PLATE DETERMINE WHICH FRICTION DISC AND WILDCAT ARE USED. THE WILDCATS FOR BB, AND PROOF CHAIN OF THE SAME SIZE (1/4" OR 5/16") ARE INTERCHANGEABLE.

THE OIL LEVEL (GROSS WEIGHT) IS FACTORY FILLED TO THE LEVEL OF THE CHAIN BREAK SCREENS—APPROX. 40 OZS. DO NOT EXCEED THIS AMOUNT

MOTOR BRUSHES
AUTOLITE NO. 88-2

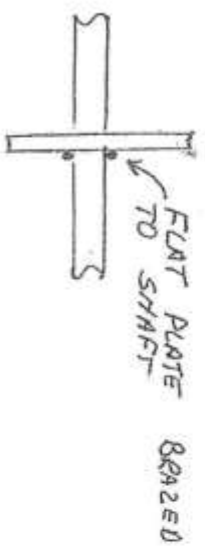


ALL SUPPORT BEARINGS LOCKED TO SHAFTS WITH TIGHT SET SCREWS

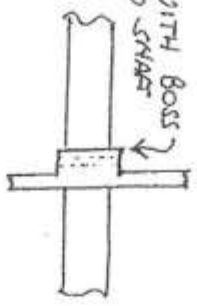
DOC FREEMAN'S INC. (206)635-1500

NOTES:

#18 - "A" SHAFT



#18 "B" SHAFT



SPECIFICATIONS & PRICES SUBJECT TO CHANGE WITHOUT NOTICE

ITEM	NAME	PART #	PRICE (EACH)	REVISED
WINCH COMPLETE - 12 VOLT - 1195.00 L.L.				
1	MOTOR COVER	001	136.50 L.L.	
2	GEAR CASE	002	250.80 L.L.	
2A	OIL SEAL (2 REQUIRED)	002A	4.16 L.L.	
3	BITT	003	47.40 L.L.	
4	CHAIN BREAK	004	12.00 L.L.	
5	BRUSH COVER	005	5.81 L.L.	
6	MOTOR 12 V.	006A	\$25.00 CORE EXCHANGE 137.42 L.L.	
7	5" "O" RING	006C	\$25.00 CORE EXCHANGE 185.58 L.L.	
8	5/8" "O" RING (VITON)	007	40 L.L.	
9	THRUST BRG.	008	34 L.L.	
10	SPACER	009	9.67 L.L.	
11	DRIVE GEAR	010	2.74 L.L.	
12	1/8" X 1-1/2" ROLL-PIN	011	19.32 L.L.	
13	5/8" SUPPORT BRG.	012	14 L.L.	
14	3/8" X 7/8" BOLT BRNZ.	013	29.67 L.L.	
15	1/4" X 1/2" SET SCREW	014		
16	GYPSY	015		
17	1/4" X 1 1/4" KEY	016	88.80 L.L.	
18A	DRIVEN SHAFT (FLAT PLATE)	017	1.56 L.L.	
18B	DRIVEN SHAFT (PLATE WITH BOSS)	018A	84.17 L.L.	
19	1" SUPPORT BRG.	018B	84.17 L.L.	
20	7/16" X 1" BOLT BRNZ.	019	33.24 L.L.	
21	1/4" X 2" ROLL-PIN	020		
22	DRIVEN GEAR	021	87 L.L.	
23	1/4" X 7/16" KEY	022	48.75 L.L.	
24	FRICTION DISC	023	80 L.L.	
A	1/4" CHAIN (A-SHAFT)	244A	7.98 L.L.	
B	1/4" CHAIN (B-SHAFT)	244B	7.98 L.L.	
A	5/16" CHAIN (A-SHAFT)	246A	9.08 L.L.	
B	5/16" CHAIN (B-SHAFT)	246B	9.08 L.L.	
25A	WILDCAT 1/4" CHAIN	254A	51.00 L.L.	
25B	WILDCAT 1/4" CHAIN	256A	53.90 L.L.	
	5/16" CHAIN	254B	51.00 L.L.	
	5/16" CHAIN	256B	53.90 L.L.	
26	FRICTION DISC	026	63.90 L.L.	
27	FRICTION PLATE	027	9.08 L.L.	
28	HAND WHEEL	028	14.85 L.L.	
29	HAND WHEEL STOP	029	52.40 L.L.	
30	1/4" X 3/4" OVAL HD.		5.20 L.L.	
31	S.S. MACHINE SCREW THRU DECK FITTING BRUSH SET	030	14.70 L.L.	
	(AUTOLITE #SE 2)	031	11.00 L.L.	

